

AluminumNow Ltd.

Commercial, Yacht & Military Construction in Aluminum, Steel or Composite
Dalton House, 60 Windsor Avenue, London SW19 2RR, England, UK

Email: enquiries@AluminumNow.com

Websites: www.AluminumNow.com
www.aluminumnownigeria.com
www.aluminumnowturkey.com
www.green-tug.com

UK:- 44 20 8133 9203
USA:- 1 (206) 866 5730
Canada:- 1 (604) 608 3178
Turkey:- +90 541 658 4480
Australia:- 61 (08) 61020192
Skype:- Alunow
Tel/ Voice Mail & Fax: +44 (0)20 7681 1505
Fax: +44 (0)700 605 0247

36m Fast Ferry 238Pax



Principal Dimensions

Length (loa):	35.60 Metres
Length (lwl):	33.12 Metres;
Beam:	8.80 Metres
Depth:	2.80 Metres
Draft:	1.25 Metres
Class Rules:-	(238 pax + 12 crew).
Fuel:	2 x 4000 ltr
Fresh Water:	1 x 1000 ltr
Sullage:	1 x 1000 ltr
Main Engines:	2 x MTU 16v2000 (1040 kw each)
Water Jets:	2 x MJP 550.
Speed:	28 Knots (service)

This medium speed cat which was delivered in April 2009, designed to meet client's requirements, this fuel efficient new high-speed catamaran ferry has proven to be a good solution for the low cost operation including very low fuel burn. The loaded speed is approx. 28 knots which is very good considering she is only powered by twin MTU 16v2000 engines (1040 kw each)



Tourist & VIP Seating

A comfortable ride is achieved with the deep vee hulls also low vibration and the noise level on the main deck is under 65dba.

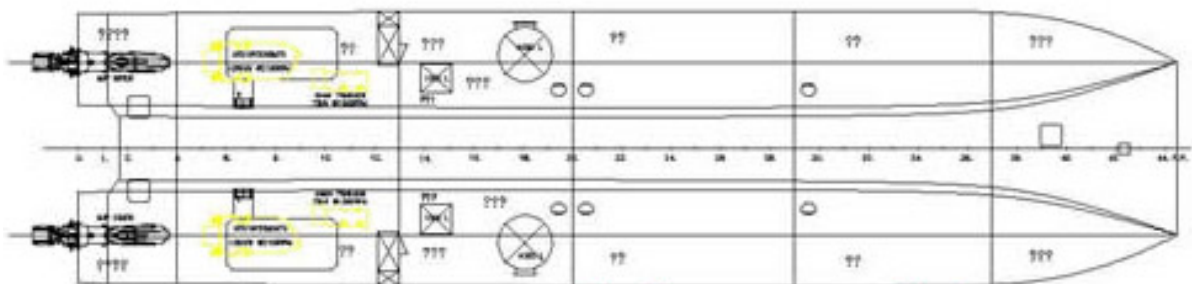
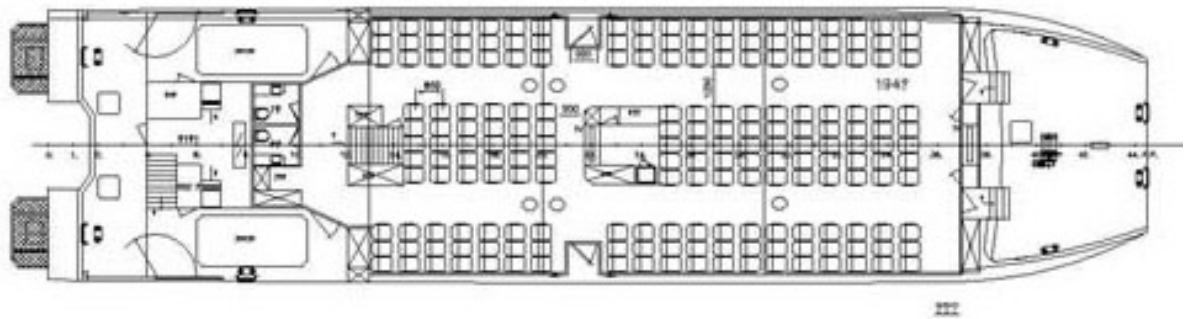
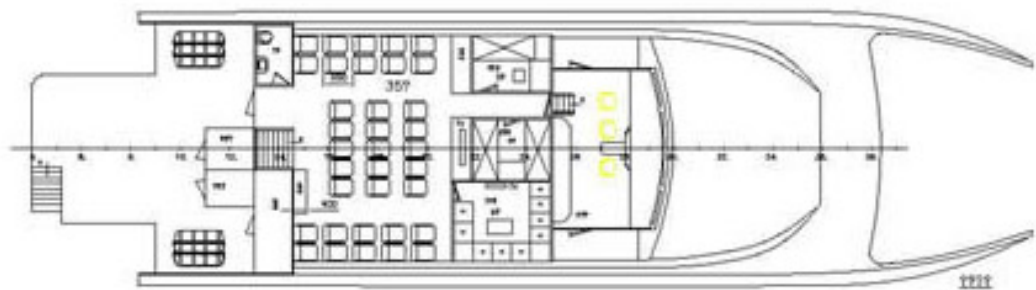
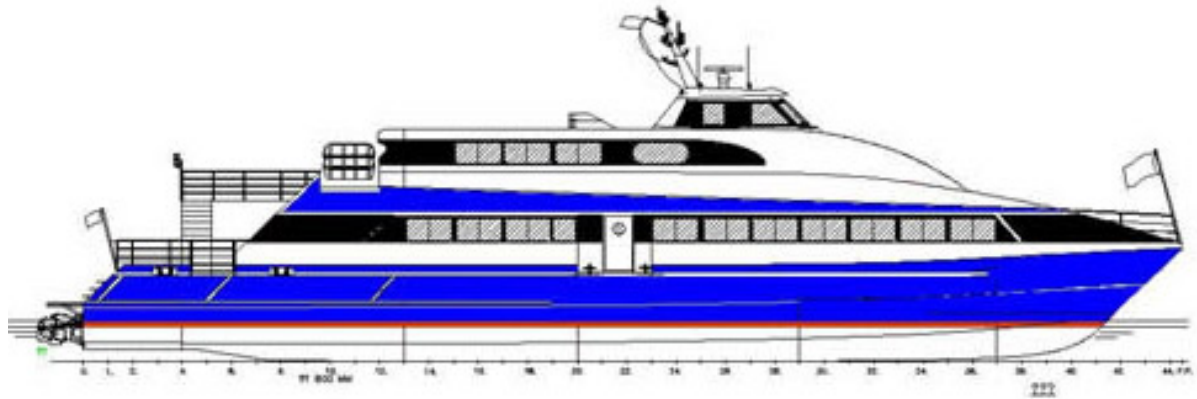
This passenger space layout accommodates 194 Passengers on the main deck and 37 VIP on the upper deck plus a private VIP room and 1 x 2 berth and 1 x 4 berth crew cabins.

This design may be draw to provide up to 300Pax and 32to 34 knots service speed if required.



Alucat 36m

28 to 34 Knots



238 to 300Pax

with design modifications