

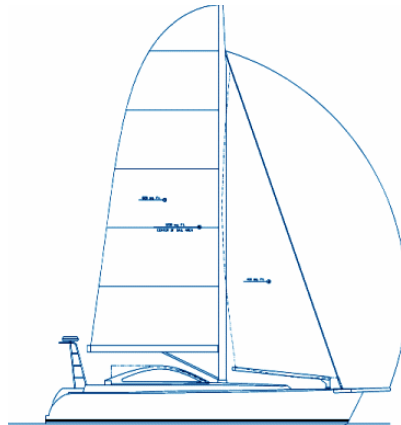
AluminumNow

New Yacht, Commercial & Military Construction in Aluminum

Email: info@AluminumNow.com
Website: www.AluminumNow.com
www.catamaranferries.com
www.aluminumnowturkey.com

Turkey Tel: 90 (0) 252 413 8833/8106
Fax: 44 20 7681 1505
Telephone & Fax:- London 44 20 7681 1505
USA 1 212 208 2579

Superior Yachts with Breakthrough Technology **FastWater 50 ExpressSail**



Specifications

Length Overall	54' 0" – 16.50m w/ bowsprit
Length On Deck	50' 0" – 15.30m
Length Waterline	47' 3" – 14.40m
Beam, Max	16' 8" – 5.10m
Beam Water Line	10' 3" – 3.12m
Draft	8' 0" – 2.45m Keel down 4' 0" – 1.22m Keel up
Displacement	26,000 lbs. – 11,820Kg.
Ballast	8,000 lbs. – 3,636Kg.
Sail Area (Actual)	1230 sq. ft.
	Main 820 sq. ft.
	Jib 410 sq. ft.
Mast Height Above DWL	66' 0" – 39.30m
Sail Area/Disp. Ratio	22.5
Disp./Length Ratio	110
Fuel Capacity	75 gal. US – 300Litres
Water Capacity	100 gal. US – 400Litres
Waste Capacity	40 gal. US – 120 Litres
Engine: Single	73 hp Yanmar™ 4JH3-TE

EuroTech Design's FastWater 50™ ExpressSail was designed as a blue water cruising sailboat that could deliver real high performance while remaining safe and easy to handle by one or two people. The 50 ExpressSail is for both experienced sailors and new comers alike. On deck she provides a protected cockpit with excellent shelter, good visibility, and direct access to all sail handling controls. The accommodations below deck offer full interior accommodations that focus on the needs of one couple with room for the occasional guest couple.

The hull shape for the FastWater 50 ExpressSail is all performance and features a long narrow waterline for speed and an easy motion in a seaway, a wide beam on deck for working space and increased stability when utilizing the water ballast tanks, and a straight run aft for good off-the-wind performance with improved handling at higher speeds. The flared topsides enable the 50 ExpressSail to maintain it's shape as it heels, minimizing the decreases in speed that results from the constant changing of wave patterns surrounding the hull. Improved steering qualities are obtained through the use of dual rudders which lessen the load on the autopilot while making manual steering in big seas and windy conditions easier and less tiring. The 50 ExpressSail is outfitted with a hydraulic lifting bulb keel and water ballast tanks providing excellent stability and improved upwind performance, while allowing shallow draft for gunk-holing or sailing in shoal areas. The 73hp diesel with three blade feathering propeller and electronic shift/throttle engine controls ensure performance and ease of handling when under power. The standard sailplane features the unique EuroTech *SoloRig*™, a rotating carbon fiber free standing mast with integral brake, custom wing main boom, roller furling self-tacking jib boom with integral boom brake, roller furling reacher and articulating bow sprit. This unique rig combined with electric winches allows one person to deploy, raise, adjust, stow, and properly trim all sails from the cockpit with ease. The unique tender compartment eliminates the windage and clutter of on-deck alternatives, and enables repeated quick and easy launching and retrieval of the dinghy. The hull and deck of the FastWater 50 ExpressSail have been designed for strength and lightweight utilizing EuroTech's *FastForm*™ computer aided solid aluminum sheet construction technique, *Alustar*™ 5059 alloy and *CeRam-Kote*™ protective coating. The internal structure consists of aluminum longitudinal stringers and aluminum ring frames with honeycomb-cored fiberglass center sectioned bulkheads. The entire hull and deck are insulated for thermal and acoustic considerations. The interior structural soles and bulkheads are of honeycomb cored fiberglass construction and the interior joiner work is a combination of lightweight wood veneered panels with hardwood trim. This method of hybrid construction offers light weight with high strength, and when combined with EuroTech's *SemTech*™ (systems, equipment & materials) advanced outfitting technology provides a seaworthy vessel that is truly easy to maintain and operate.

Construction

- Hull and deck constructed of *Alustar*™ 5059 aluminum alloy, utilizing *SailTech FastForm*™ construction method.
- All aluminum surfaces interior and exterior hull coated with *CeRam-Kote*™.
- High gloss polyurethane topcoat on all hull and deck surfaces.
- Silica nonskid incorporated into *CeRam-Kote*™ on horizontal deck surfaces.

Electrical

- All AC-DC tinned and irradiated wiring.
- All wiring run through isolated conduit.
- Isolated DC ground system throughout.
- *Paneltronics*™ AC-DC electrical panel with LED digital meters, and plexiglass door.
- *YachtGard*™ AC-DC surge protection.
- *Charles*™ 12kw isolation transformer.
- 50amp 220vac shore service split to 120vac.
- Dockside cable TV and telephone.

Construction Con't

- Internal structure consisting of longitudinal stringers bonded with advanced epoxy and mythacrylate adhesives, welded aluminum ring frames with honeycomb cored composite center sections, and honeycomb cored composite structural soles.
- Entire hull and deck is insulated for thermal and acoustic considerations.
- Watertight crash bulkheads/compartments in the bow.
- Lifting bulb keel with electro-hydraulic lifting system.
- Port and starboard integral seawater ballast tanks.
- Interior of all deck and anchor lockers coated with polyurethane protective lining.
- Twin aluminum spade rudders.
- Aluminum rudder shafts with *PYT*TM bearings.
- Antifouling paint below waterline and running gear.
- Flush mounted hull zincs
- 10-year structural warranty.
- Construction in accordance with *ABYC*.
- Factory rigging and commissioning.

Mechanical

- *Maxpower*TM 12vdc bowthruster
- Single 73hp *Yanmar*TM marine diesel engine with C-type engine panel.
- *PYT*TM flexible coupler, engine mounts, and dripless stuffing box.
- Stainless steel propeller shaft, with *Spurs*TM weed/line cutter.
- *Maxprop*TM three-blade feathering propeller.
- One *Powerline*TM 120amp alternator with three-step regulation and temperature sensing.
- *Reverso*TM oil change pump.
- *Puratec*TM fuel purification system.
- *Groco Hydromatic*TM seawater intake/strainer system.
- Twin single lever *Glendinning*TM electronic engine shift/throttle.
-

Electrical Con't

- *Glendinning Cablemaster*TM shore cord storage system for shore power and TV/telephone cable.
- 800 amp *Lifeline*TM AGM house battery banks with emergency isolation switching.
- Single 105amp *Lifeline*TM AGM engine starting battery.
- *SALT*TM battery monitoring meter.
- Battery isolator/combiner/parallel system.
- *Vanner*TM 2600 inverter/120amp charger.
- *Taylorbrite*TM 12vdc CCF interior lighting with dimmer switches.
- 12vdc running lights.
- 12vdc anchor light.
- 12vdc steaming/foredeck light with guard.
- LED courtesy lighting throughout including all hanging lockers.
- Remote shut-off for propane.
- 12vdc interior fans for each cabin space.
- Central vacuum cleaner system.

Plumbing

- Seawater ballast system with four integral aluminum tanks (2 port & 2 starboard) with manifold and electric seawater pump operated from cockpit.
- *Sea Tech*TM fresh water plumbing system with manifold.
- *ITT Jabsco*TM water pressure system.
- Two *Sealand Vacuflush*TM heads and holding tank system including level gauge, y-valve, macerator pump and deck fitting.
- Polyethylene baffled water tank with level gauge.
- Separate sealed shower sumps with auto pump out.
- *Isotemp*TM twelve-gallon 120vac water heater with engine heat exchanger.
- Two 2000gph 12vdc bilge pumps with auto switch.
- One *Whale Gusher*TM manual bilge pump.
- Manual fresh water foot-pump in galley.
- *Seagull*TM water filter at galley sink.

Mechanical Con't

- Electro-hydraulic pump for keel lift system.
- Engine room exhaust blower.
- Engine spare parts and workshop manual.
- *Whitlock*TM mechanical steering system.
- Independent aluminum baffled fuel tank with inspection ports, *CeRam-Kote*TM coating and level gauge.
- Emergency tiller system.
- *Fireboy*TM MA-2 manual/automatic fire extinguishing systems with automatic engine shut downs.
- Three *Fireboy*TM portable fire extinguishers.

Cockpit and Deck

- Port and starboard helm stations with bulkhead mounted destroyer wheels, wheel brakes, and compass binnacles.
- Port and starboard helm seats with gear and six-man life raft storage below.
- Fixed doghouse with glass windows, integral sliding canvas cockpit bimini top, and forward windshield washer and wiper.
- 32" anodized aluminum stanchions with double lifelines, and boarding gates port and starboard.
- Aluminum bow pulpit.
- Aluminum stern pulpits with integral seats.
- Decks cambered for quick draining with integral toe rail and *HullShield*TM rubrail.
- Port and starboard integral safety harness rails in cabin top.
- Aluminum bow, amidships and stern cleats.
- Aluminum handrails.
- Aluminum opening ports with integral screens and blinds in hull sides.
- Two *Nicro Fico*TM solar/12vdc ventilators.
- Aluminum opening hatches in deck with integral screens and blinds.
- Locking companionway hatch with integral rollaway screen.
- Foredeck locker with locking latch.
- Integral line storage bins in cockpit.

Plumbing Con't

- One 20 lb. aluminum propane bottle with gauge.
- All seacocks *Forespar Marelon*TM.
- Hot and cold deck shower.
- Dockside water.
- Fresh water wash at stern.
- Seawater anchor wash down.

Main Cabin

Galley

- Full-length walk-thru galley to port with easy access to cockpit and interior.
- Generous counter space fabricated of a decorative solid surfacing material.
- Double molded sinks positioned near centerline for good drainage with hot and cold mixer/spray faucet.
- Top opening *Adler Barbour/WAECO*TM AC/DC refrigerator.
- Top opening *Adler Barbour/WAECO*TM DC freezer.
- *Broadwater*TM two-burner propane stove and oven with drop in cover.
- Overhead galley exhaust fan system.
- Upper and lower storage cabinets inboard and outboard.
- Central located electrical panel for easy access from cockpit or below decks.
- Pantry with shelving.
- Space for microwave and trash compactor.

Salon

- U-shaped settee with storage below and adjustable height coffee/dining table.
- Fore and aft art niches with storage lockers outboard.
- Space for entertainment center and flat screen TV.

Cockpit and Deck Con't

- *Marinedeck 2000™* exterior synthetic simulated teak decking on cockpit sole, cockpit seat tops, and transom steps.
- Stowaway cockpit table.
- Storage areas outboard of cockpit seat backs.
- Port and starboard navigation areas at forward end of cockpit with room for electronic displays.
- Large cockpit drains.
- Aluminum radar arch and mainsail sheeting base.
- Transom tender garage for inflatable with electric door lifts, 12vdc tender winch and rollers.
- Vinyl aft deck sun pad.
- Port and starboard lazarettes.
- Port and starboard transom steps.
- Folding/telescoping transom swim ladder.
- *Maxwell™* 1200 12vdc vertical anchor windlass mounted in recessed anchor well with chain gypsy and capstan, reversing, deck switches, and remote switch with chain counter.
- Anchor roller.
- One model #100 *Spade™* 20lb. aluminum anchor with 200 feet of 5/8" nylon anchor rode and 30' stainless steel chain.

Sails and Rigging

- SailTech *SoloRig™*: includes rotating freestanding carbon mast with integral brake, *Furlboom™* roller furling mainboom, and roller furling self-tacking jib boom with integral boom brake.
- Roller furling reacher with articulating bowsprit
- Full batten Dacron mainsail.
- Rigid boom vang.
- Self-tacking Dacron jib with vertical battens.
- *Harken™* headsail roller furling recessed in foredeck.
- All running rigging color-coded.
- Main halyard, main furling, mainsheet and main boom brake lead aft to sheet stoppers and *Harken™* 44st electric winch forward of port helm station.

Forward Master Stateroom

- Queen-sized berth with large storage and wire bins below accessed by hinged bunk top supported by gas springs.
- Large cedar lined hanging locker and vanity to port.
- Centerline drawer bank with cedar lined drawers.
- Space for entertainment center.
- Master head with freshwater *Vacuflush™* head, separate shower stall, mirror, vanity with decorative solid surface countertop, and molded sink.

Port Aft Guest Stateroom

- Double berth with large storage and wire bins below, accessed by hinged bunk top supported by gas springs.
- Storage lockers at head of berth.
- Cedar lined hanging locker.
- Access to engine compartment.

Starboard At-Sea Stateroom

- Upper and lower sea berths with lee clothes.
- Ventilated wet locker.
- Storage lockers at foot of berths.
- Access to engine compartment.
- Access to day head with freshwater *Vacuflush™* toilet, hot and cold shower, mirror, storage lockers, and vanity with decorative solid surface countertop and molded sink.

Engine Compartment

- Separate centerline engine compartment, easily accessible from port and starboard staterooms.
- Sound and thermal insulation.
- Enclosed engine sump.
- Fresh water and 110vac outlet.
- 12vdc fan

Sails and Rigging Con't

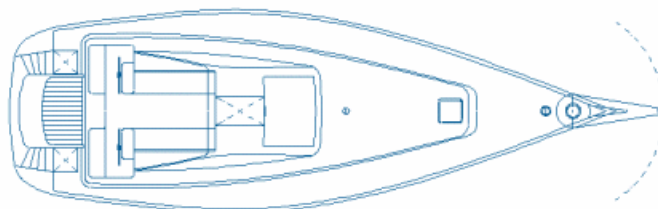
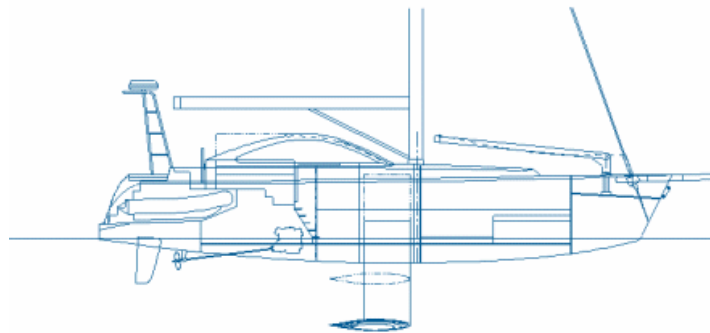
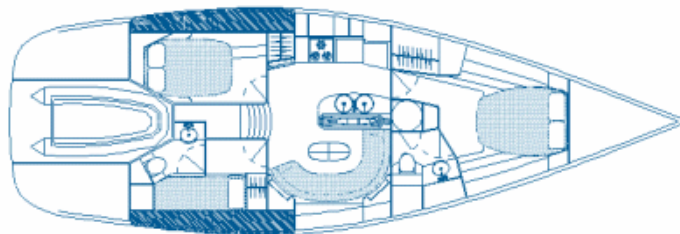
- Jib furling, jib sheet, and jib boom brake lead aft to sheet stoppers and *Harken*[™] 44st electric winch forward of starboard helm station.
- All deck hardware by *Harken*[™].
- Flag halyards and cleats.

Interior

- Interior finish consists of naturally finished lightweight wood joiner work, set against light colored vinyl fabrics, padded hull side panels, and soft headliner.
- Simulated wood soles in living areas, and composite soles in heads.
- Counter tops and sinks manufactured of a decorative solid surfacing material.

Options

- *Next Generation*[™] 5kw generator
- *CruiseAire*[™] 26,000 Btu reverse cycle air conditioning system.
- *MST Guardian*[™] engine flush system.
- *Spectra*[™] 400 watermaker.
- Tri-radial *Spectra*[™] mainsail and jib.
- Navigation and communications electronics.
- Stereo and TV.
- 150watt solar panels.
- Trash compactor.
- Icemaker.
- Microwave oven.
- Safety equipment



Note: Specifications are subject to change without notice. The builder reserves the right to make alterations as considered desirable. No such alterations however are to be considered retroactive with respect to yachts delivered, under construction or under contract. Draft, displacement, and performance can all vary based on load. This is neither a warranty nor are any warranties implied. The manufacturer's liabilities are strictly limited to the warranty as described in Limited Warranty documents provided.